


water & sanitation

 Department:
Water and Sanitation
REPUBLIC OF SOUTH AFRICA

[HOME](#) [NEWS](#) [DOCUMENTS](#) [CONTACTS](#) [MY WATER](#) [BLUE DROP STATUS](#) [COMPLIANCE](#) [REPORTS](#)

Compliance Summaries

Filter

 Region : Western Cape
 Institution : Beaufort West Local Municipality
 Supply System : Institution Overview
 Type : Microbiological
 Standard : 2014 Blue Drop Determinand List (Limits)
 Date : June 2015 LOAD

Microbiological 2014 Blue Drop Determinand List (Limits) Compliance

Month	Jul 14	Aug 14	Sept 14	Oct 14	Nov 14	Dec 14	Jan 15	Feb 15	Mar 15	Apr 15	May 15	Jun 15
-------	--------	--------	---------	--------	--------	--------	--------	--------	--------	--------	--------	--------

Supply System Submissions

Registered :	4	4	4	4	4	4	4	4	4	4	4	4
Submitting :	4	4	4	4	4	4	4	4	4	4	4	3
Percentage :	>99.9%	>99.9%	>99.9%	>99.9%	>99.9%	>99.9%	>99.9%	>99.9%	>99.9%	>99.9%	>99.9%	75.0%

Analysis

Total :	19	26	20	19	20	18	20	18	20	19	19	16
Failures :	0	0	0	0	0	0	0	0	0	0	0	0
Recurring :	0	0	0	0	0	0	0	0	0	0	0	0
Compliance	>99.9%	>99.9%	>99.9%	>99.9%	>99.9%	>99.9%	>99.9%	>99.9%	>99.9%	>99.9%	>99.9%	>99.9%

Samples

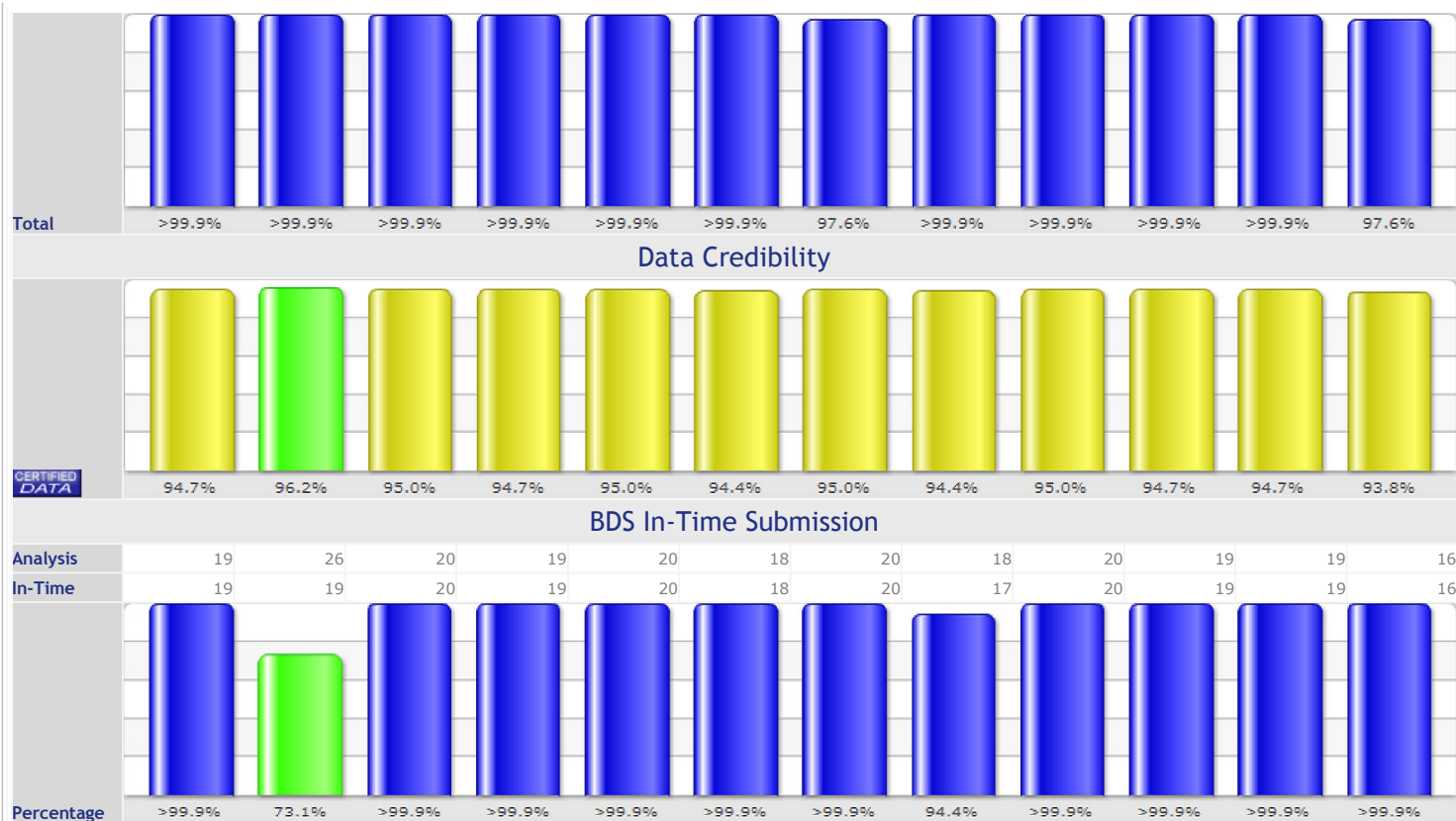
Total :	19	26	19	19	20	17	20	18	20	19	19	16
Failures :	0	0	0	0	0	0	0	0	0	0	0	0
Compliance	>99.9%	>99.9%	>99.9%	>99.9%	>99.9%	>99.9%	>99.9%	>99.9%	>99.9%	>99.9%	>99.9%	>99.9%
Frequency	>99.9%	>99.9%	>99.9%	>99.9%	>99.9%	84.6%	92.3%	92.3%	>99.9%	>99.9%	>99.9%	76.9%

Sites

Total :	19	20	19	19	19	17	20	18	20	19	19	16
Failures :	0	0	0	0	0	0	0	0	0	0	0	0
Compliance	>99.9%	>99.9%	>99.9%	>99.9%	>99.9%	>99.9%	>99.9%	>99.9%	>99.9%	>99.9%	>99.9%	>99.9%
Population Coverage :	>99.9%	>99.9%	>99.9%	>99.9%	>99.9%	>99.9%	>99.9%	>99.9%	>99.9%	>99.9%	>99.9%	85.7%

Monitoring Compliance

Monthly (F)	>99.9%	>99.9%	>99.9%	>99.9%	>99.9%	>99.9%	93.3%	>99.9%	>99.9%	>99.9%	>99.9%	93.3%
Annual (F)	>99.9%	>99.9%	>99.9%	>99.9%	>99.9%	>99.9%	>99.9%	>99.9%	>99.9%	>99.9%	>99.9%	>99.9%



<<< June 2015 >>>

Microbiological 2014 Blue Drop Determinand List (Limits) Compliance - Supply System Summaries

System	Water Quality											Monitoring Compliance			<div>CERTIFIED DATA</div>
	Analysis			Samples				Sites				Monthly	Annual	Total	
	Total	Failures	%	Total	Failures	%	Frequency	Total	Failures	%	Coverage				
Beaufort West	13	0	>99.9%	13	0	>99.9%	>99.9 %	13	0	>99.9%	>99.9%	>99.9%	0.0%	>99.9%	92.3%
Merweville	0	0	0.0%	0	0	0.0%	0.0 %	0	0	0.0%	0.0%	0.0%	>99.9%	>99.9%	0.0%
Murraysburg BWM	1	0	>99.9%	1	0	>99.9%		1	0	>99.9%	>99.9%	50.0%	0.0%		>99.9%
Nelspoort	2	0	>99.9%	2	0	>99.9%	>99.9 %	2	0	>99.9%	>99.9%	0.0%	>99.9%	>99.9%	>99.9%
Beaufort West Local Municipality	16	0	>99.9%	16	0	>99.9%	76.9 %	16	0	>99.9%	85.7%	93.3%	>99.9%	97.6%	93.8%

Site Hits : 7,783,402

Online :10

Page Hits : 145,181



Programme Support & Queries



Chat Online



Programme Administrator
012 336 6511
Call Centre Toll Free Line
0800 200 200

This site is best viewed with Internet Explorer 7.0 (or newer) at 1024x768 screen resolution. [Click here](#) to download Internet Explorer 7

If you experience any challenges regarding this site, please contact the [Webmaster](#).